

GRID GEAR

GRIDGEAR SOLUTIONS LTD



1610 DERWENT WAY #14  
DELTA, BC V3M 6W1



INFO@GRIDGEAR.CA



+1.888.512.1392

## GRIDGEAR'S GG SOLID STATE, kWh METERS FOR SUBMETERING

### GG FEATURES AND SPECIFICATIONS

Each GridGear GG meter is designed with the following features and intended applications:

- Revenue grade
- Multiple Certifications: ANSI C12.20, 0.5 accuracy class; UL listed (E489079); California State Approval (CTEP); New York State Approval
- 1/2/3 element, 120/208/240V
- 100A-2500A meter amperages, with split-core and solid-core CT availability
- 3.3V radio integration, with custom integration hardware
- Screwless terminal blocks for ease of installation
- 10 year warranty on GridGear products when installed according to installation instructions
- Various enclosure styles (Surface Mount, Flush Mount, Multi-Meter Unit); same per meter price regardless of enclosure style
- Quick turnaround times (approximately 2-3 weeks)

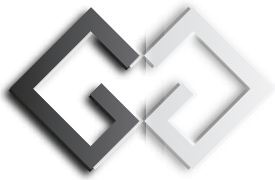


## GG ASSEMBLIES

Each GridGear GG meter is pre-packaged in a customized kit optimized for the customer and application. All kits include:

- 1) GG submeter
- 2) UL approved split-core or solid-core CTs
- 3) UL approved in-line fuse holders with 1A fuses
- 4) Neutral wire tail
- 5) UL Wago wire splicing connectors
- 6) Third-party transceiver connection cable
- 7) Enclosure style of your choice (Surface Mount, Flush Mount, Multi-Meter Unit)





GRID GEAR

## GG ENCLOSURE STYLES

### FLUSH MOUNT

GridGear GG-FLUSH enclosures are available for both retrofit and new-construction applications. Custom printing is also available for customers.

EXTERNAL VIEW



INSTALLER'S VIEW



### SURFACE MOUNT

GridGear GG-SURFACE enclosures are NEMA-certified for both indoor and outdoor applications. Custom printing is also available for customers.

EXTERNAL VIEW



INSTALLER'S VIEW



Surface-Mount Enclosure dimensions:  
5.9" x 5.9" x 3.54"

GRIDGEAR SOLUTIONS LTD



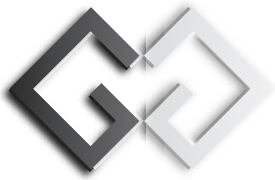
1610 DERWENT WAY #14  
DELTA, BC V3M 6W1



INFO@GRIDGEAR.CA



+1.888.512.1392



GRID GEAR

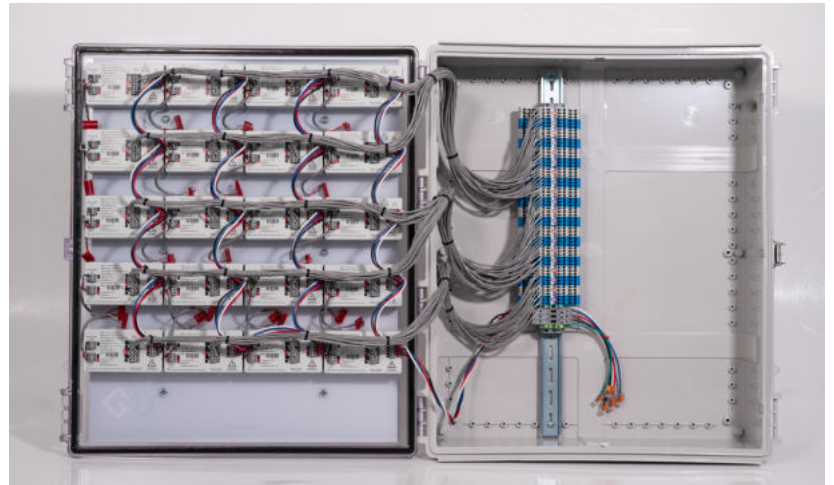
## GG ENCLOSURE STYLES

### MULTI-METER UNIT (MMU)

EXTERNAL VIEW



INSTALLER'S VIEW



GridGear GG-MMU enclosures are designed with the following features and intended applications:

- 2-28 meters per MMU, same price per meter regardless of enclosure
- UL approved, NEMA rated electrical enclosure for both indoor and outdoor applications
- Custom printed enclosure with company logo and color scheme
- Pre-wired configuration and pre-labelled din rail terminal blocks for ease of installation
- Apartment number labelling
- Extended CT leads
- Quick turnaround times

Each GridGear GG-MMU can be designed with the following sizes (in inches) of UL approved, NEMA electrical enclosures (Width x Height x Depth):

- 2-3 meter MMU - 11.8" x 7.87" x 5.12"
- 4-6 meter MMU - 13.78" x 9.84" x 5.9"
- 7-15 meter MMU - 19.69" x 15.75" x 6.3"
- 16-24 meter MMU - 23.62" x 19.69" x 7.09"
- 25-28 meter MMU - 27.56" x 19.69" x 7.09"



If there are custom size requirements for your application, please inquire to see if alternative enclosure sizes are available for your MMU specifications.

GRIDGEAR SOLUTIONS LTD



1610 DERWENT WAY #14  
DELTA, BC V3M 6W1



INFO@GRIDGEAR.CA



+1.888.512.1392